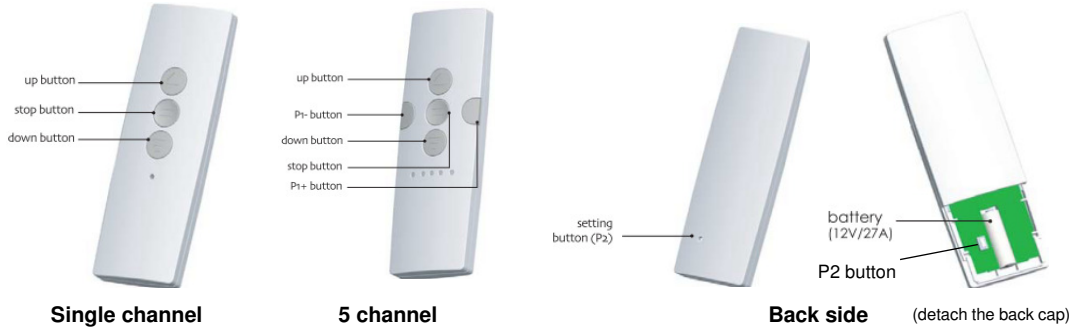


# Pro-Lift Motor Programming Guide

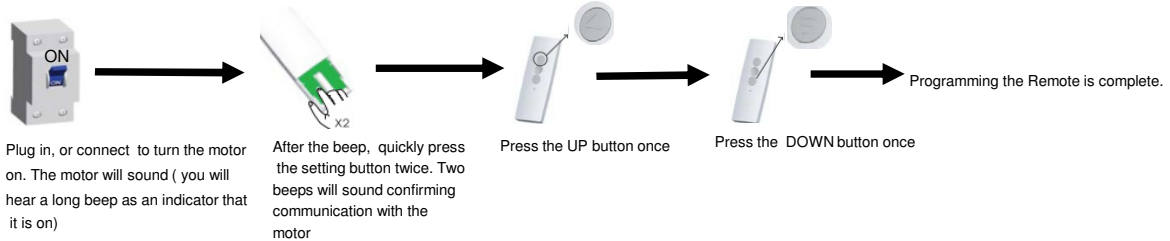
## Remote control types



## For the AC motors (35R & 35S) & AC silent motor (45Q)

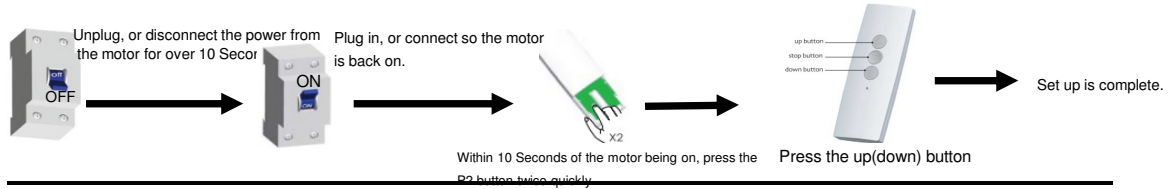
### Programming Steps

#### 1. Set up-Programming the Remote. *pairing a remote to a motor*

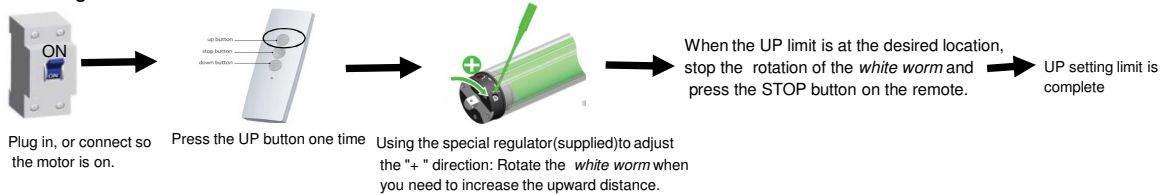


#### 1.1 Set up-Direction. *IF the shade is operating in reverse*

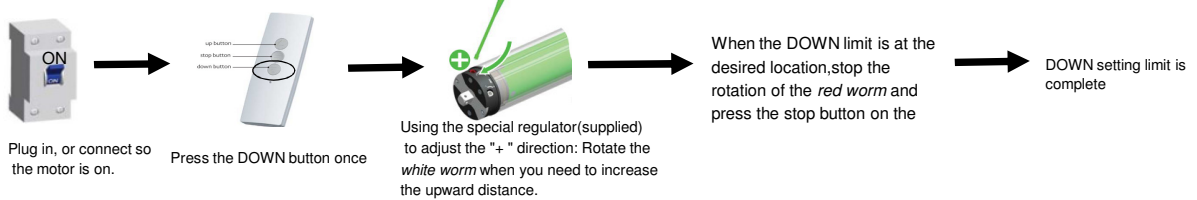
When the UP button is pressed, the shade runs downward. Or, when the DOWN button is pressed, the shade runs upward:



#### 2. Setting the UP limit of the shade

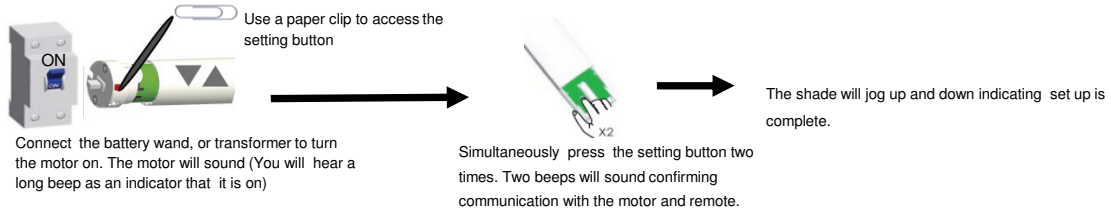


#### 2.1 Setting the DOWN limit of the shade



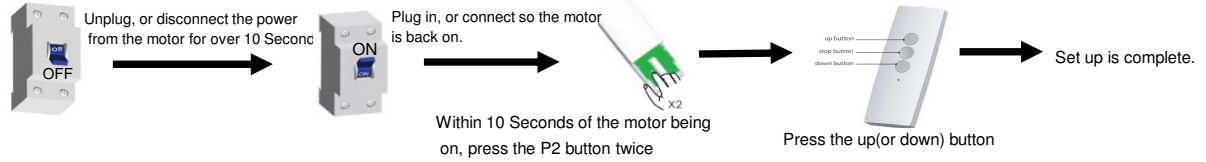
**For the DC motor 24V (25DE 24V) & battery motor 12V (25CE 12V)**

**3. Set up-Programming the Remote. *pairing a remote to a motor***

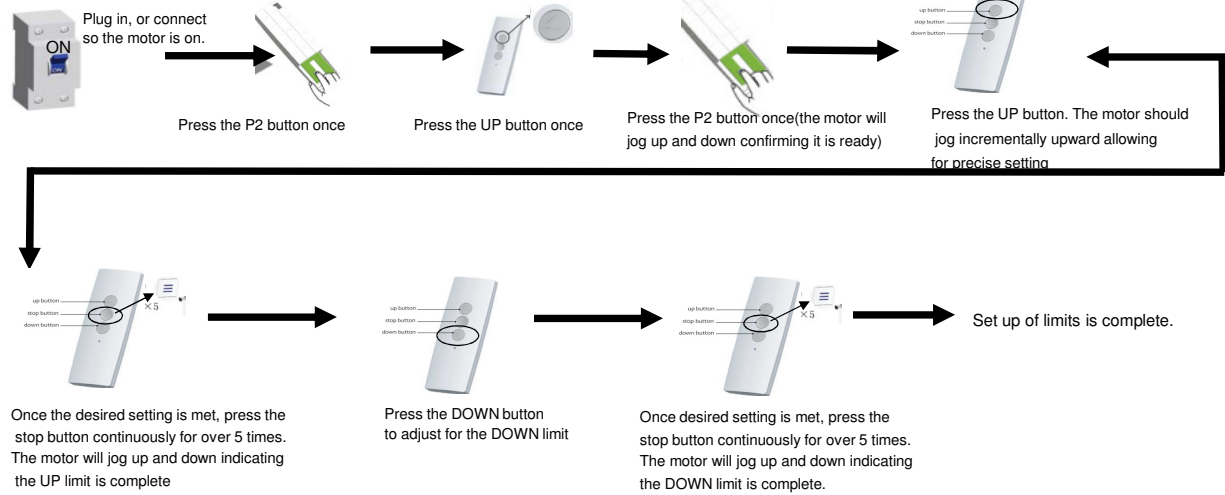


**3.1 Set up- Direction. *If the shade operates in reverse***

If the UP button is pressed, the shade runs downward. Or, if the DOWN button is pressed, the shade runs upward:



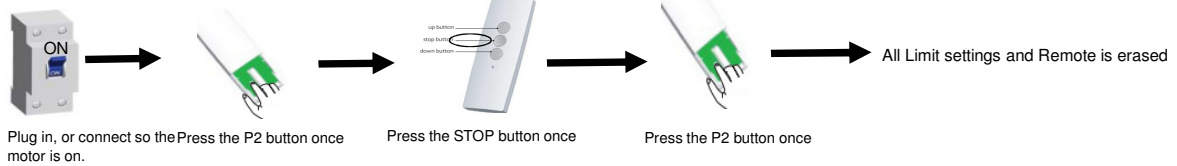
**4. Setting the UP/DOWN limits of the shade**



**For all Pro-Lift Motors**

**How to Reprogram**

**5. Reset factory mode.**



**5.1 Re-program your motor following the *Set Up- Programming the Remote* instructions**

**Programming an additional remote**

**6. Adding a remote so that two remotes operate one motor**

